



## Former Wisley Airfield

Community Liaison Group  
Meeting 8

Topic: Design

28<sup>th</sup> January 2021

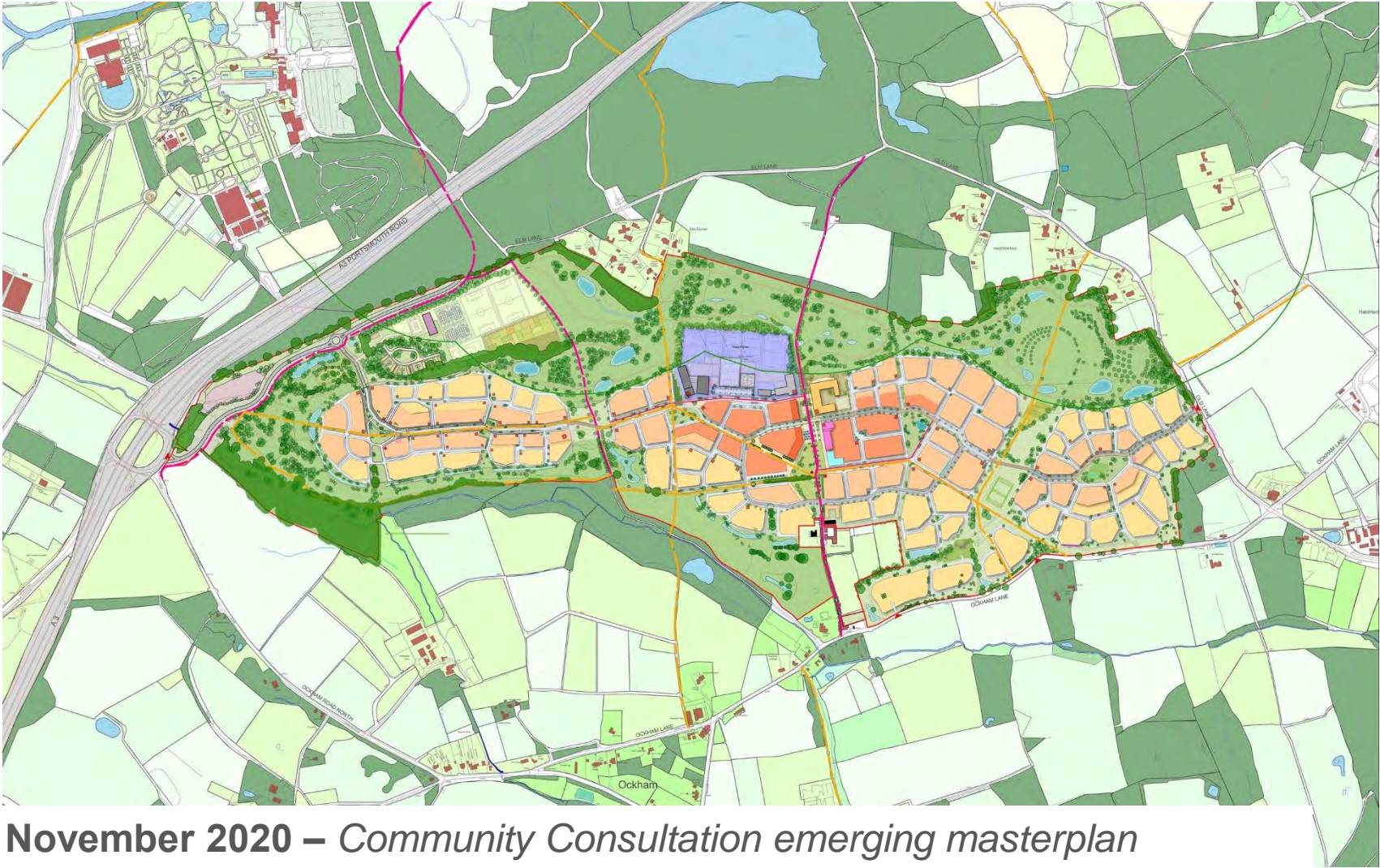
# Masterplan Framework

## Ideas Map





# Masterplan Character



November 2020 – Community Consultation emerging masterplan



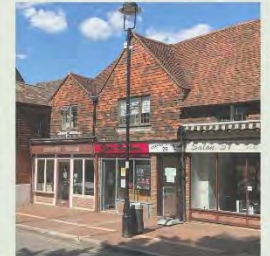
# Masterplan Character

## Local Character

- Settlement Structure & Form
- Green Spaces
- Massing
- Boundaries and Set Backs
- Architectural Form
- Architectural Detailing

FORMER WISLEY AIRFIELD

SURREY VILLAGES : LOCAL VERNACULAR STUDY



REVISION B

GSA

# Masterplan Character

## Local Materials Palette

- Predominant material is **red orange brick**
- Other bricks include softer **red-brown brick multistock**, and a **buff stock brick**
- **Red clay tile hanging** is a common decorative feature on gables -both scallop and plain tiles.
- **Timber boarding** appears occasionally - often appearing on a feature gable or for ancillary buildings.
- Light shades of **render** or **painted brickwork**.
- **Red clay** roof tiles. Some **slate** roofs





# Masterplan Character

What Makes A Village Green?



# Masterplan Character

## Local Village Greens



**Pub & Village Water Pump – Brockham**



**Traditional Signage – Worplesdon**



**Village Pond – Chiddingfold**



**Community Space – Brockham**



**Open Space & Retail – Cranleigh**



**Cricket Pitch – Shamley Green**



# Masterplan Character

## Local Village Greens



Shamley Green



Brockham





# Masterplan Character

## Local Village Greens



Cranleigh



GREEN 2 : LOCATION PLAN



Chiddingfold





# Masterplan Character

## Local Village Greens



GREEN 3 : LOCATION PLAN



GREEN 4 : LOCATION PLAN

Worplesdon



# Masterplan Character

## Settlement Identity

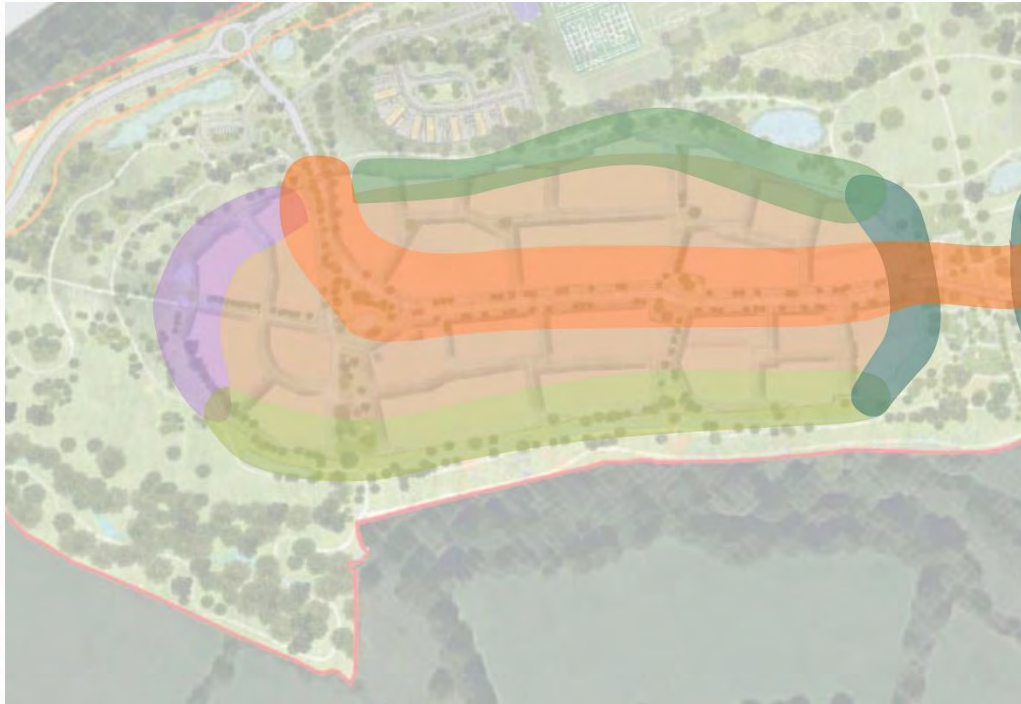


- West Village (Village 1)
- Central Village West (Village 2)
- Central Village East (Village 2)
- East Village (Village 3)
- Southern Gardens
- Neighbourhood Centre

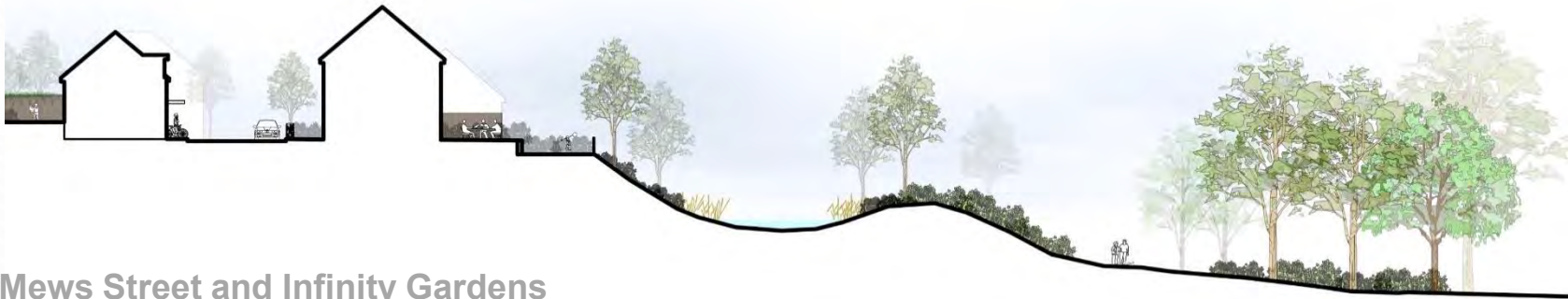


# Masterplan Character

## Character Areas – West Village



- Northern SANG Edge
- Southern Woodlands – Infinity Gardens
- Western Entrance Edge
- Greenway Edge
- Sustainable Transport Corridor
- Streets and Lanes



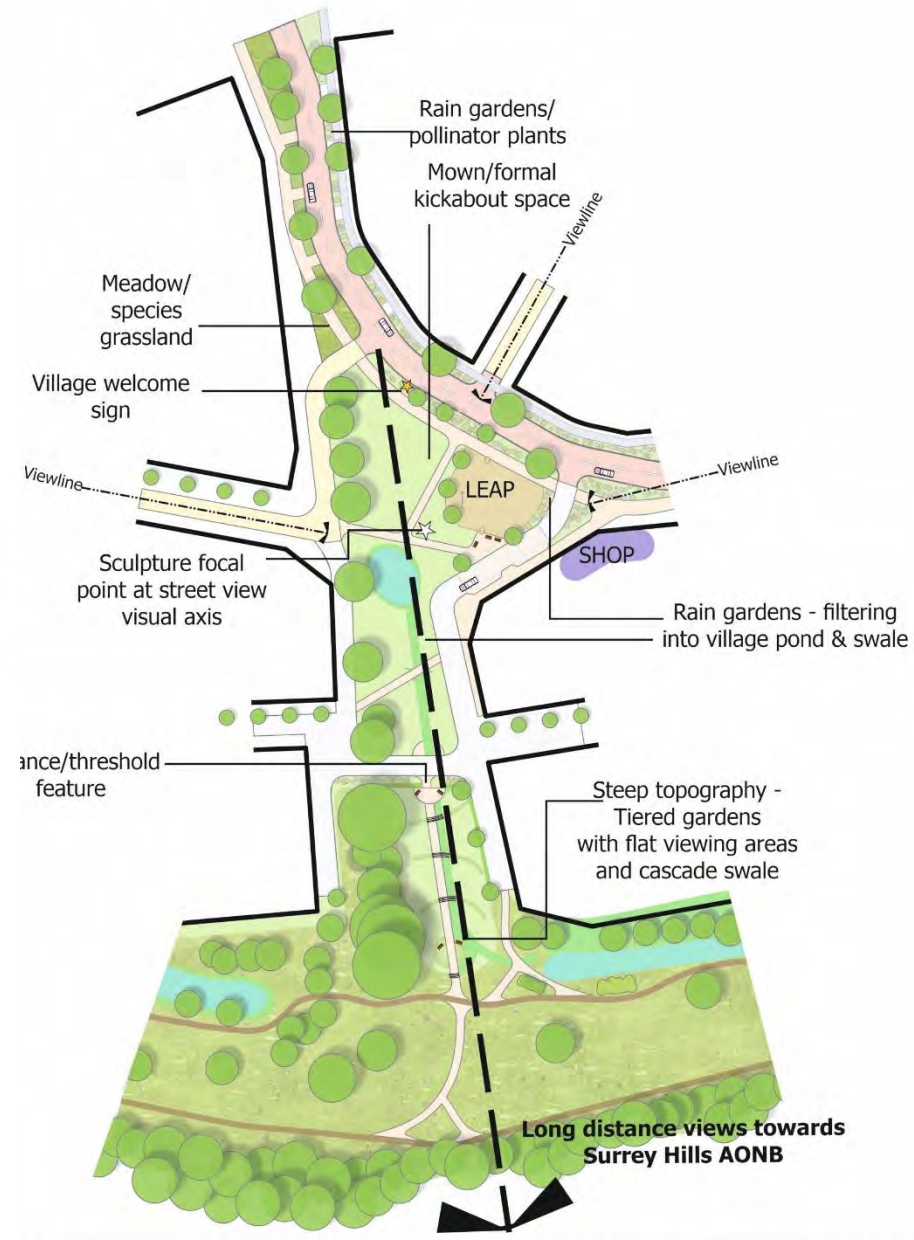
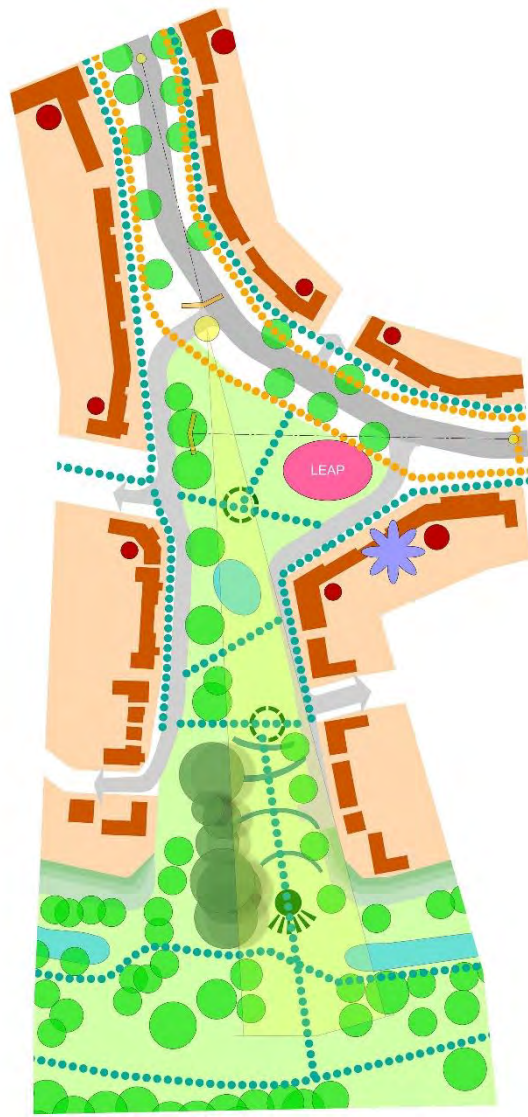
Mews Street and Infinity Gardens



# Masterplan Character

## Set Pieces – Village Green 1

-  Development Parcel
-  Strategic Open Space
-  SusTrans Route
-  Tertiary Streets & Lanes
-  Pedestrian Route
-  Cycle Route
-  Continuous Frontage
-  Looser Active Frontages
-  Focal Buildings & Key Corners
-  Location for Community Facility or Shop
-  Play Area
-  SUDS Feature (opportunity for biodiversity)
-  Landscaped Slope to Infinity Gardens onto Southern SANG
-  Landscape Focal Space (opportunity for social interaction)
-  Landscaping Tiered to Work With Contours
-  Opportunity for Viewing Platform / Feature
-  Existing Tree
-  Proposed Tree
-  Strategic Views





# Masterplan Character

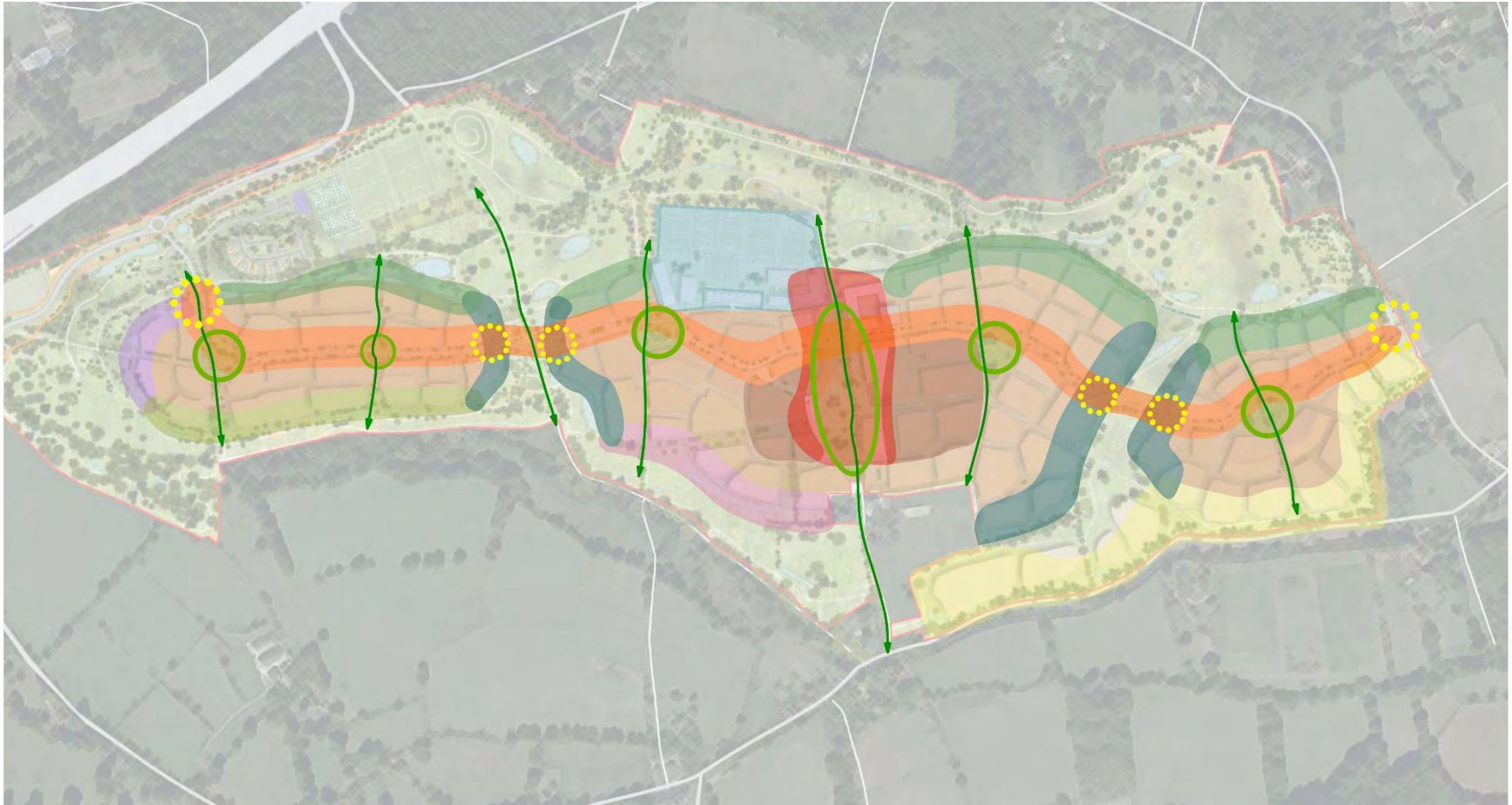
## The Village Green





# Masterplan Character

## Character Areas and Set Pieces



- |                            |                                |                          |                |
|----------------------------|--------------------------------|--------------------------|----------------|
| Northern SANG Edge         | Greenway Edge                  | The Schools              | Village Greens |
| Southern Woodlands         | Sustainable Transport Corridor | Streets and Lanes        | Green Links    |
| Southern SANG Edge Arcadia | Ockham Edge                    | Urban Courts and Squares | Arrival Event  |
| Western Entrance Edge      | Neighbourhood Centre           |                          |                |



# Masterplan Character

Northern SANG Edge - Low Density





# Masterplan Character

## SANG Edge – Low Density Parcel Study



SECTION AA - Northern SANG Edge and Mews Street

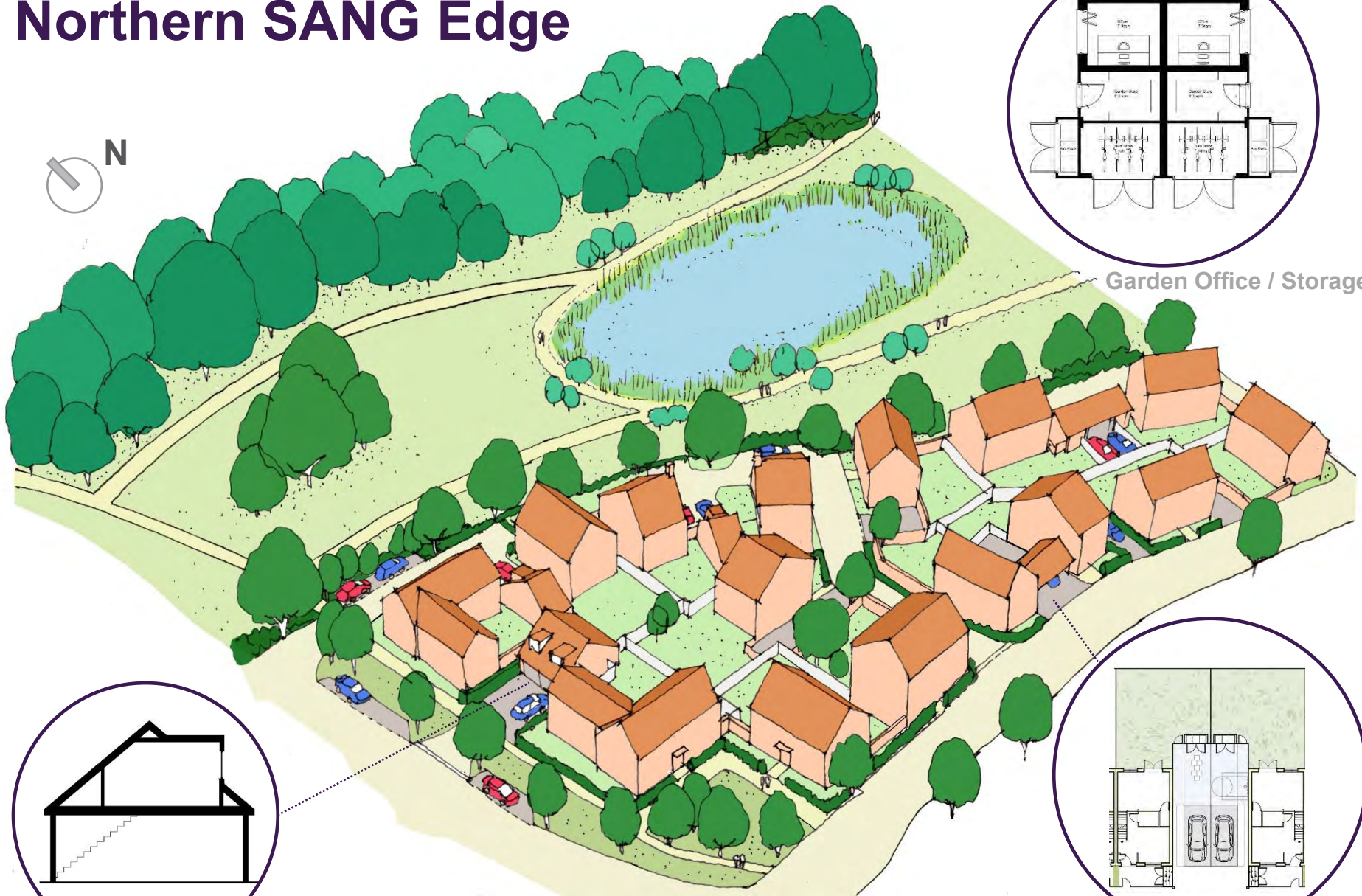


SECTION BB - Green Link to SANG Edge





# Northern SANG Edge



Garden Office / Storage

Home Office above Garage

Play Space



# Masterplan Character

## Northern SANG Edge



Arborfield Green, Wokingham (GSA)



Ockford Park, Godalming (JTP)



Frecks Farm, Burgess Hill (PRP)



Mindenhurst, Deepcut (GSA)



# Masterplan Character

## Sustainable Transport Corridor – Medium Density

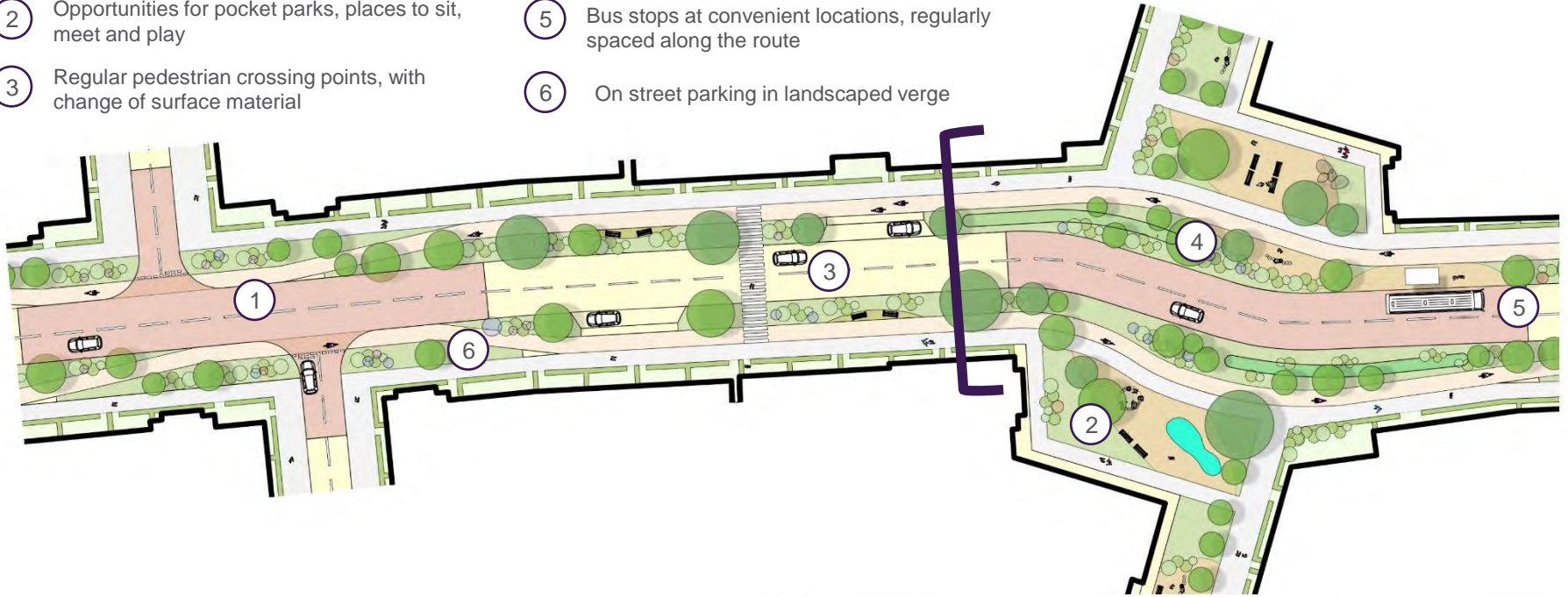




# Masterplan Character

## Sustainable Transport Corridor

- 1 Cycleway on both sides of carriageway, with priority at junctions
- 2 Opportunities for pocket parks, places to sit, meet and play
- 3 Regular pedestrian crossing points, with change of surface material
- 4 Surface Water drainage incorporated into generous landscaping
- 5 Bus stops at convenient locations, regularly spaced along the route
- 6 On street parking in landscaped verge



West Village: Sustainable Transport Corridor



Central Village: Sustainable Transport Corridor



# Masterplan Character

## Sustainable Transport Corridor





# Masterplan Character

## Sustainable Transport Corridor



Marleigh, Cambridge (PTEa)



Garlicks Arch (OSP)



Prince Phillip Barracks, Bordon

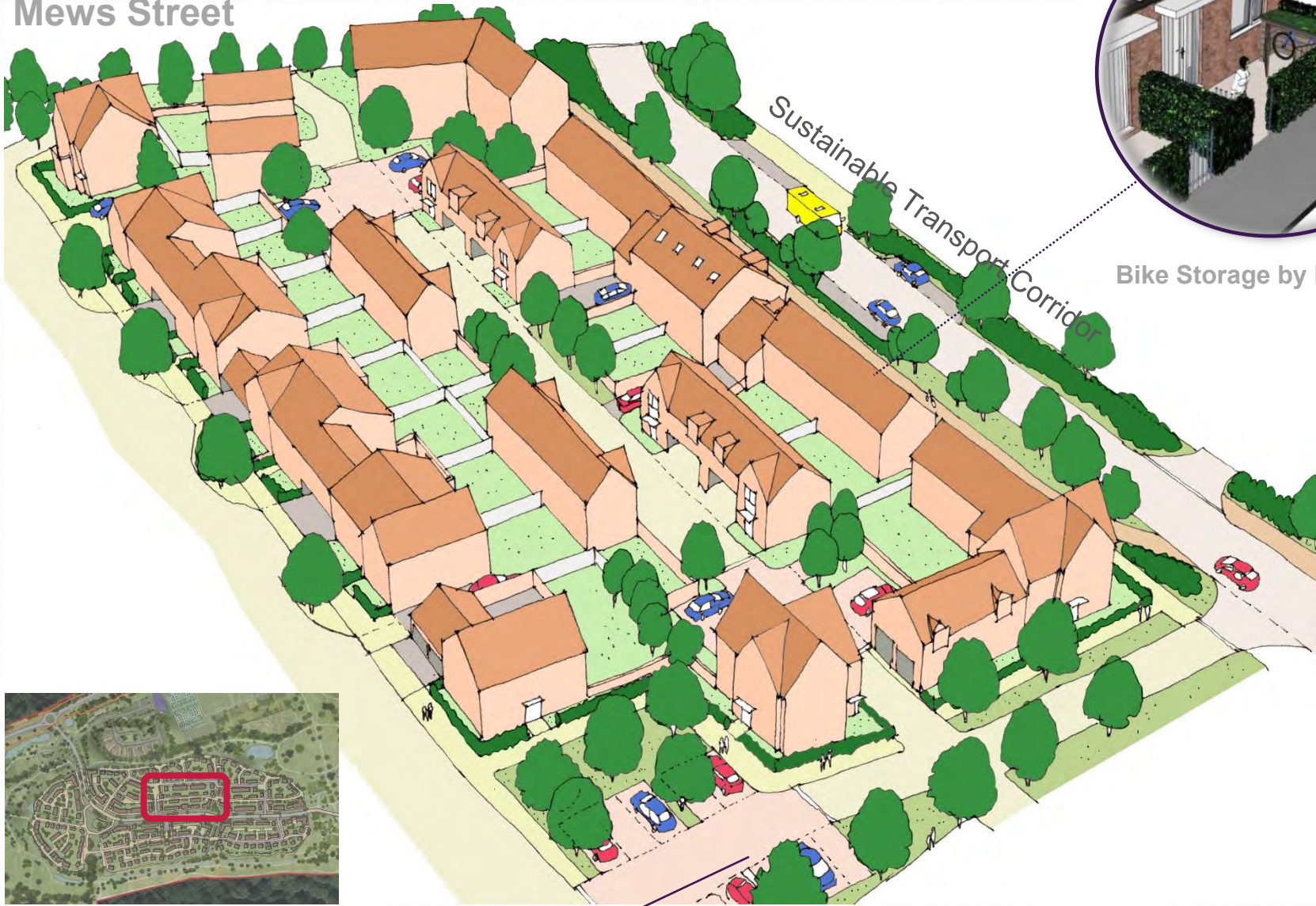


Ingress Park, Dartford (GSA)



# Masterplan Character

Mews Street



Bike Storage by Front Door

Sustainable Transport Corridor

To Northern SANG





# Masterplan Character

## Streets and Lanes





# Masterplan Character

## Streets and Lanes - Medium Density



Marleigh, Cambridge (PTEa)



Abode, Cambridge (Proctor and Matthews)



Ingress Park, Dartford (GSA)



The Avenue, Saffron Walden (PTEa)

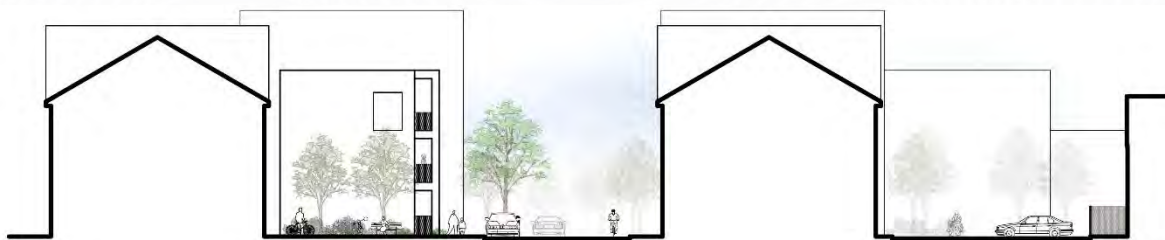
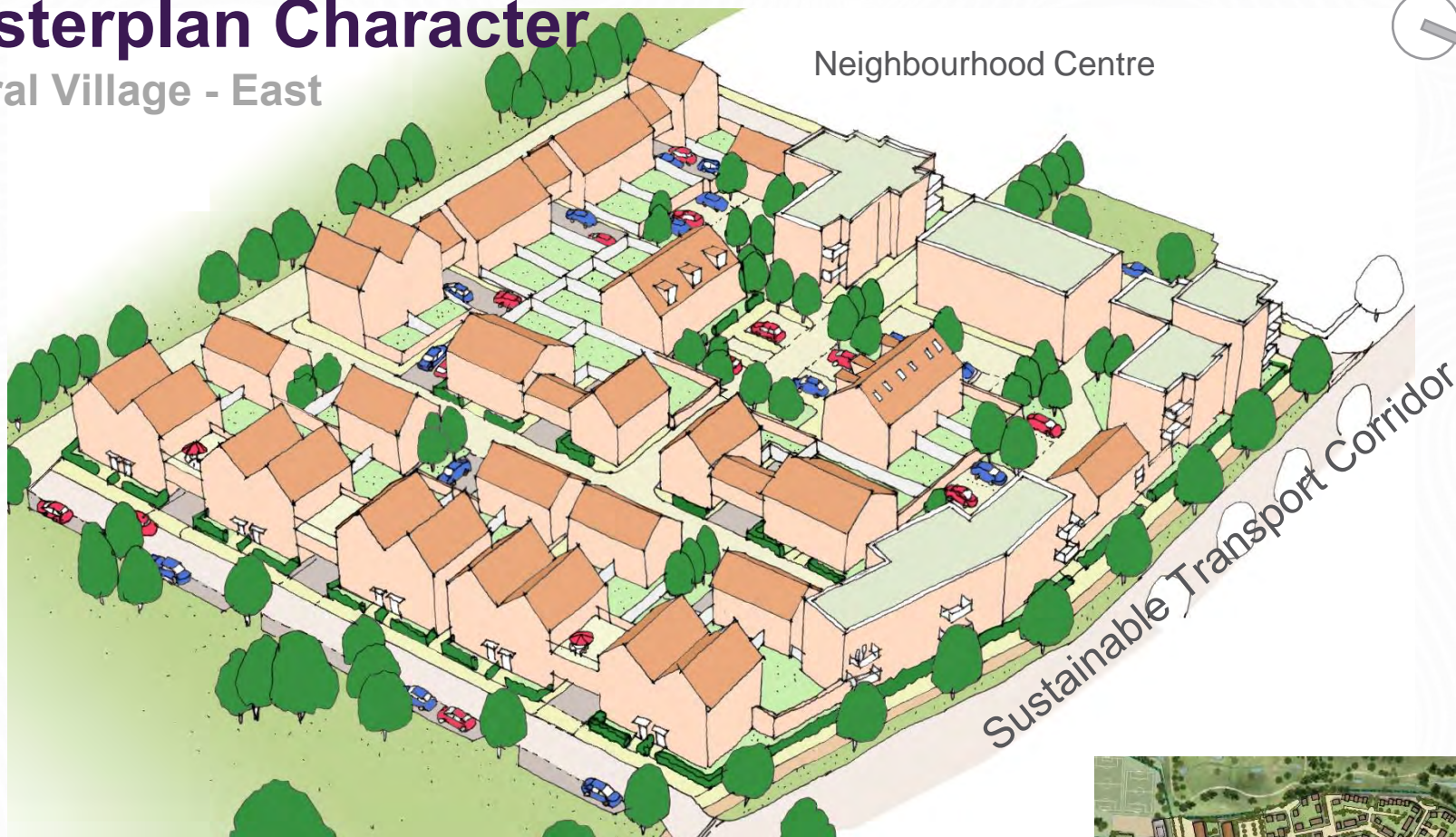


# Masterplan Character

## Central Village - East



Neighbourhood Centre



SECTION FF – Central Village East





# Masterplan Character

## Higher Density



Marleigh, Cambridge (PTEa)



Maidenhead (GSA)



Union Street, Aldershot (JTP)



# Masterplan Character

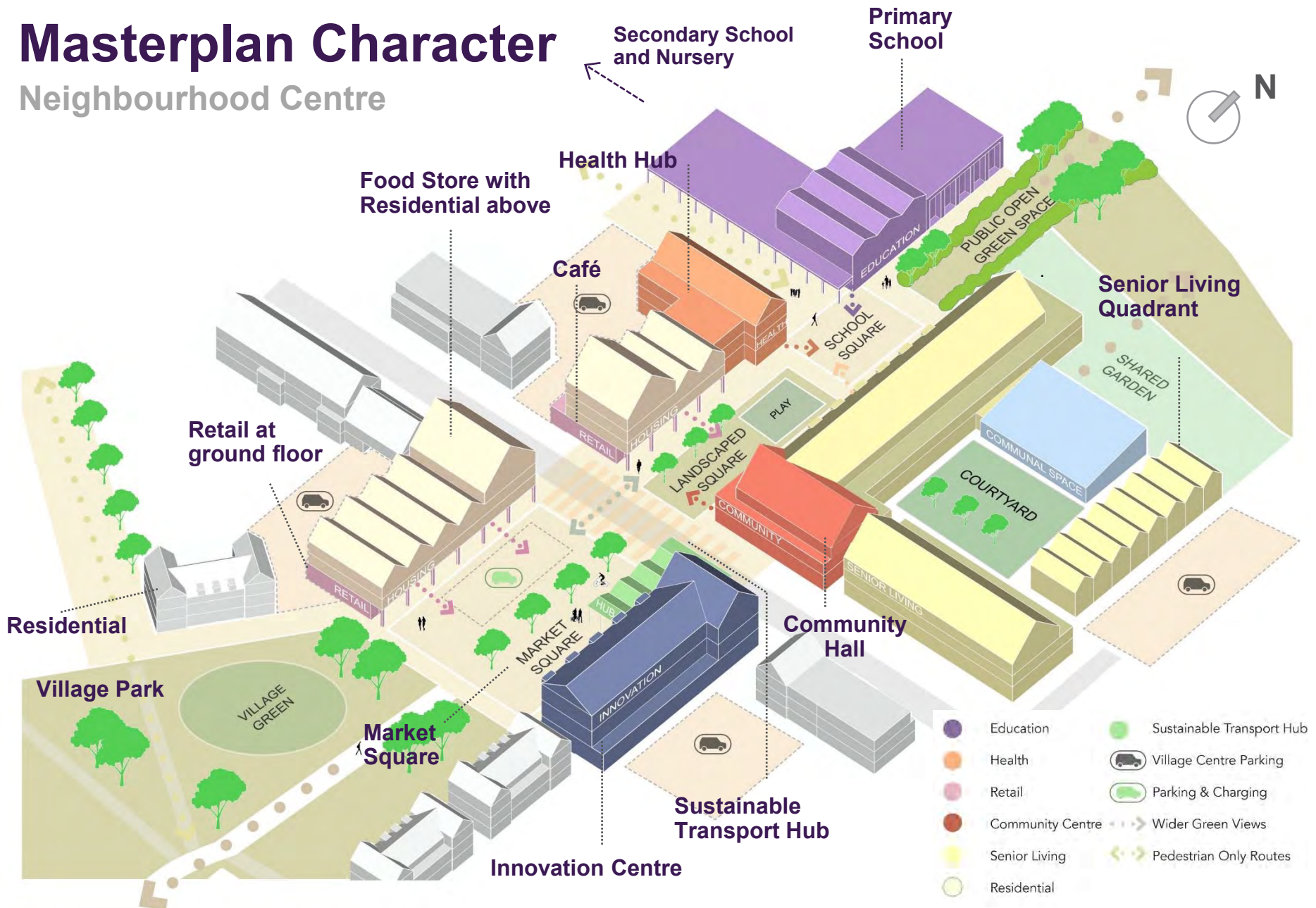
## Higher Density





# Masterplan Character

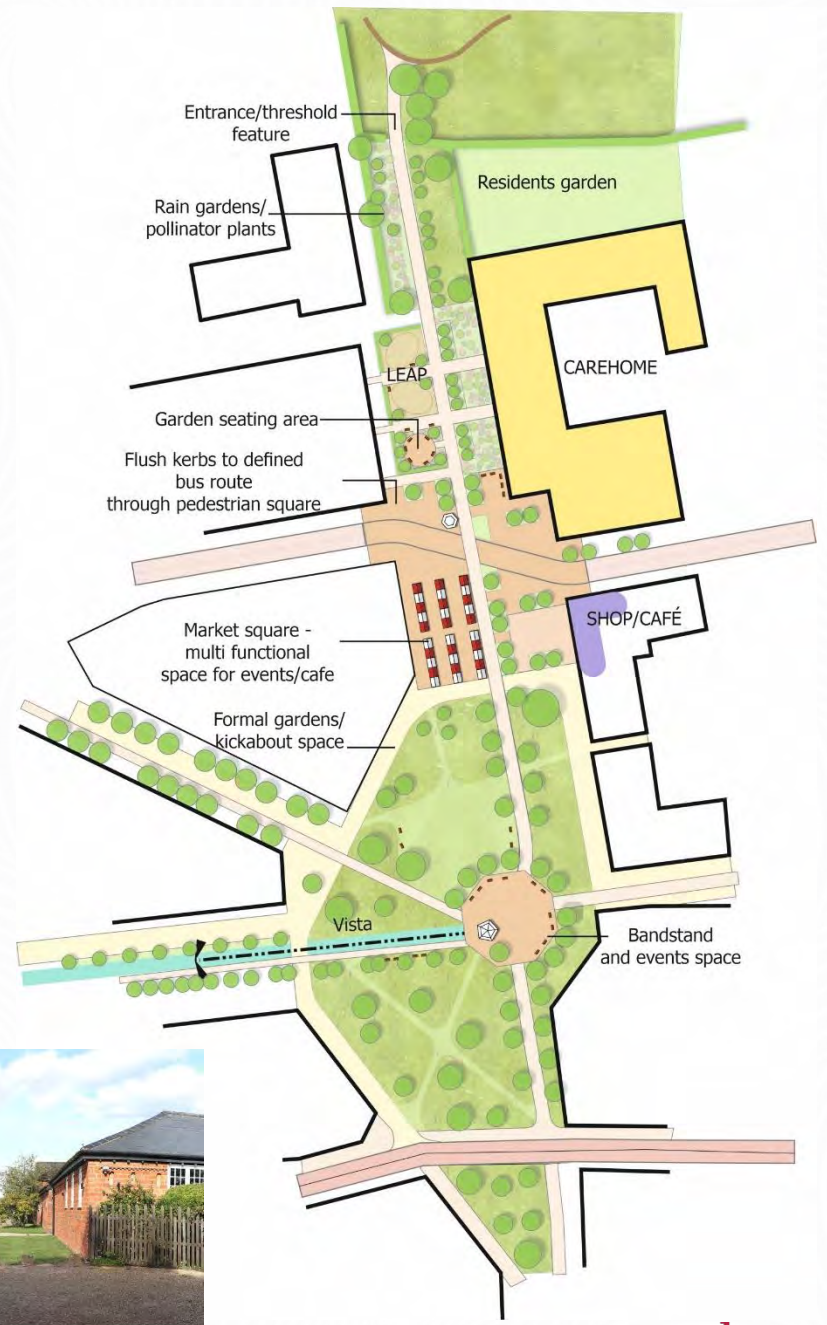
## Neighbourhood Centre





# Masterplan Character

## Central Corridor





# Masterplan Character

## Neighbourhood Centre – Character examples





Thank You